

How South Africa is making progress towards the Aichi 2020 Target 11

Montreal, Canada
2 May 2016



Oceans and Coasts



environmental affairs

Department:
Environmental Affairs
REPUBLIC OF SOUTH AFRICA



Content

- Protected area considerations and progress 1994-2010
- Terrestrial Protected Area expansion 2005 – 2015
- Operation Phakisa and Marine Protected Area expansion efforts 2014-2016
 - Operation Phakisa (Big Fast Results)
 - MPA objectives and considerations including EBSA descriptions
 - Proposed MPAs – a short tour
 - Implementation and way forward



environmental affairs

Department:
Environmental Affairs
REPUBLIC OF SOUTH AFRICA



Considerations and Progress: 1994-2010

- **1994** – South Africa achieves **Democracy** (celebrated on 27 April)
- **1996 - New Constitution**, mandates environmental protection
- **2003/4**: New legislation, including **Biodiversity Act** and **Protected Areas Act**, as well as **People and Parks Programme** to involve and benefit local communities impacted by protected areas.
- **2008**: National Protected Area Expansion Strategy.
- **2010: Aichi Target 11: 10% marine and 17% terrestrial protection**
- **2010** : Protected Area expansion included in South Africa's National Development Plan



environmental affairs

Department:
Environmental Affairs
REPUBLIC OF SOUTH AFRICA



National Protected Area Expansion Strategy (2008)

Develop a national framework for an integrated, co-ordinated and harmonised uniform approach in the expansion and consolidation of protected areas,

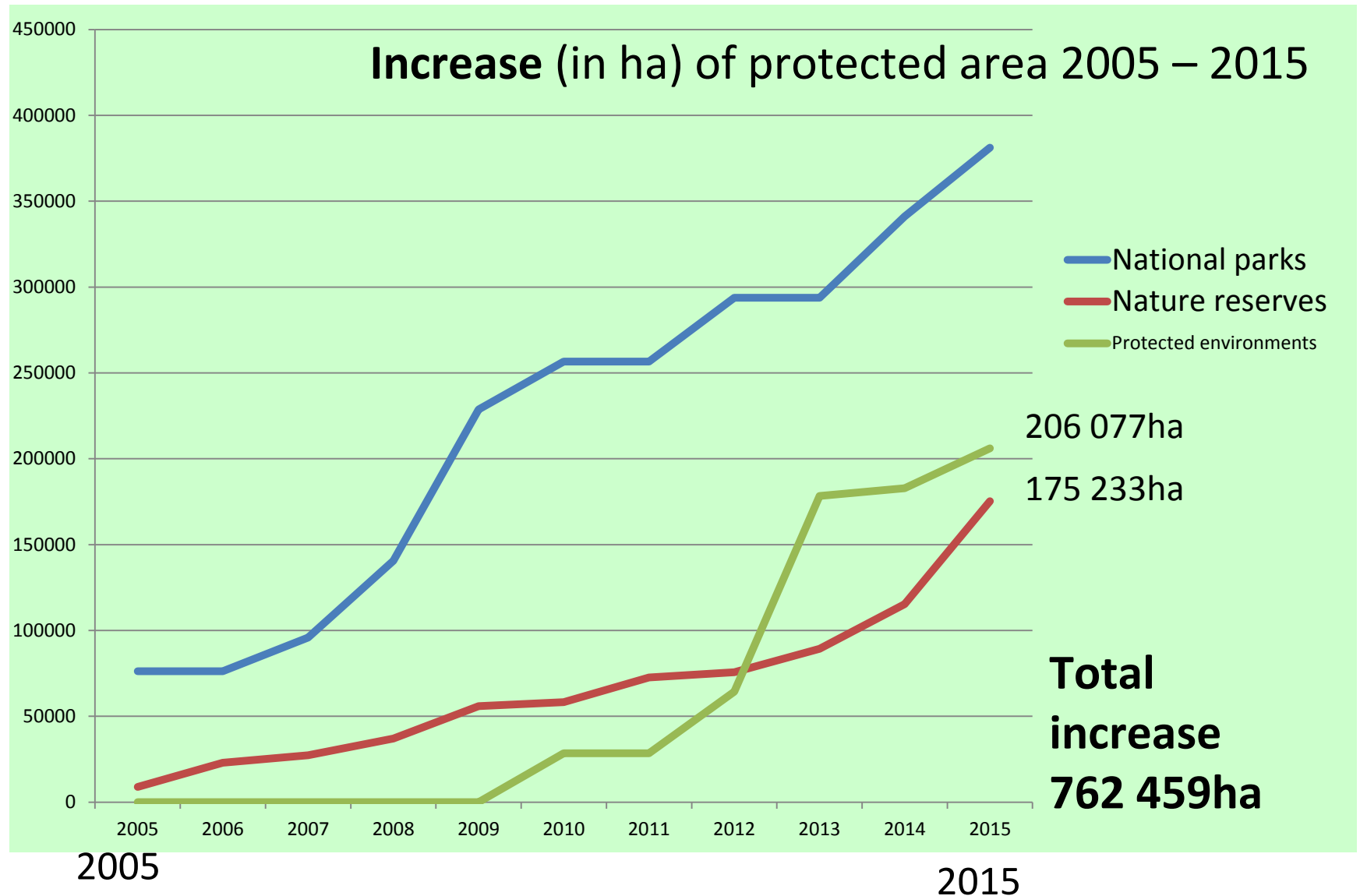
– *for ecological sustainability and climate change adaptation*



environmental affairs

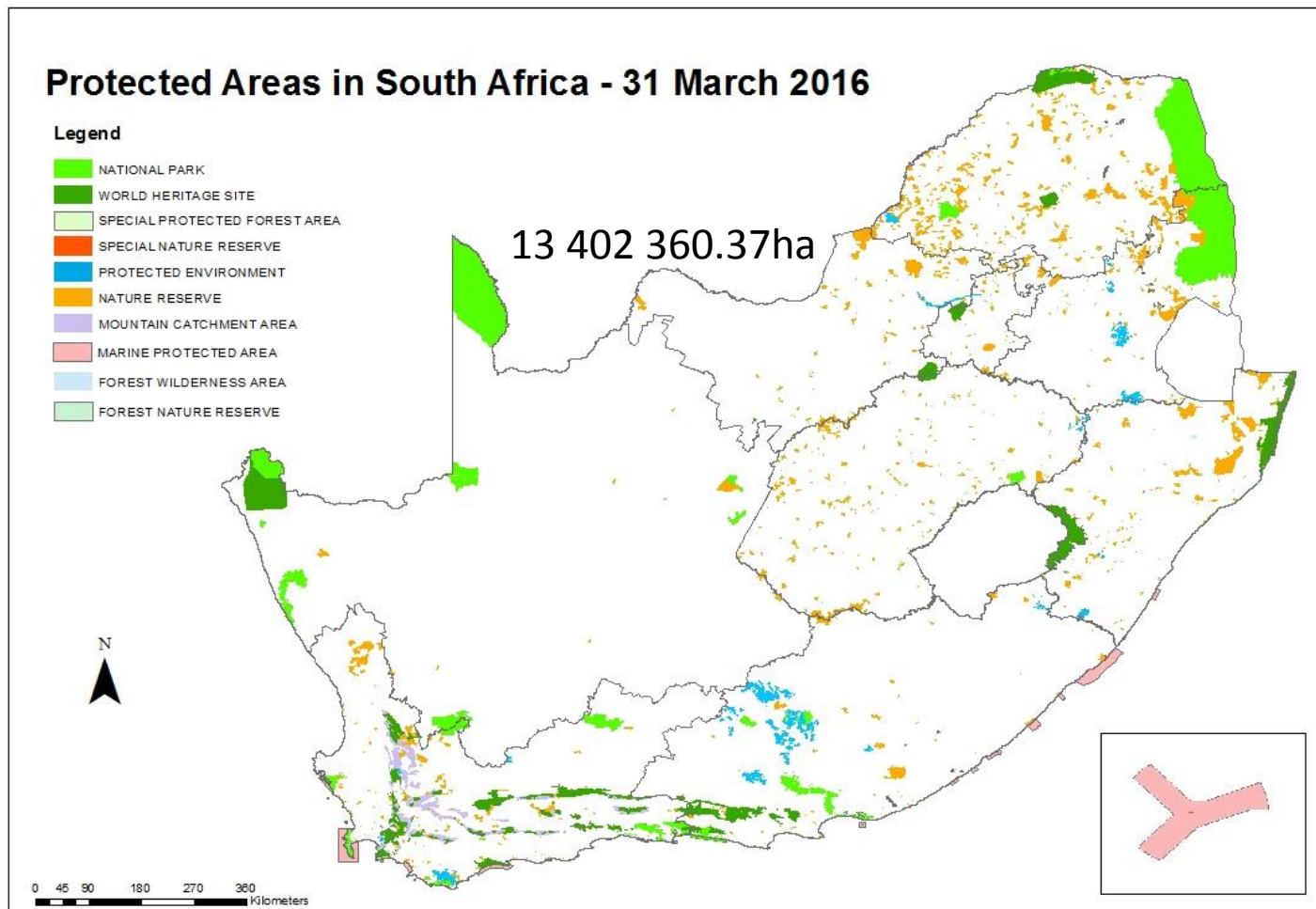
Department:
Environmental Affairs
REPUBLIC OF SOUTH AFRICA

Terrestrial protected areas



Terrestrial Protection 2016

- Formal protection only : **7.8%**
- Formal and conservation areas = 13,402, 360ha: **11.7%**
- **New plans to cover freshwater ecosystem priority areas**





Protection of ocean environment

Mainland Marine Protected Areas < 0.5% of EEZ

Current situation

- 0,5 percent of our EEZ under protection is insufficient to maintain sustainable benefits from our marine ecosystems.
- Creation of a viable network of MPAs was identified as a priority by Operation Phakisa.
- This being necessary to protect the full spectrum of marine biodiversity, secure ocean benefits and advance the implementation of Marine Spatial Planning.



environmental affairs

Department:
Environmental Affairs
REPUBLIC OF SOUTH AFRICA



Operation Phakisa

Four growth areas were selected to be discussed in the Operation Phakisa Labs

1



- Marine transport and manufacturing

2



- Offshore oil and gas exploration

3



- Aquaculture

4



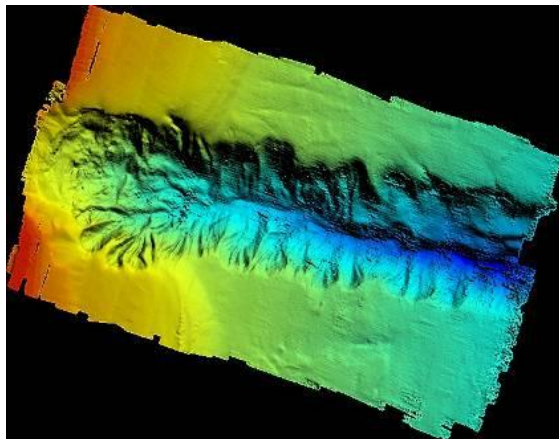
- Marine protection services and governance

**Contains 10 initiatives –
MPAs are only one.**

Now also marine tourism

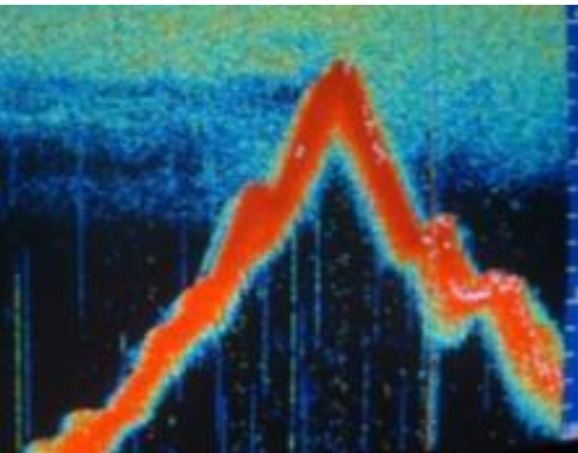
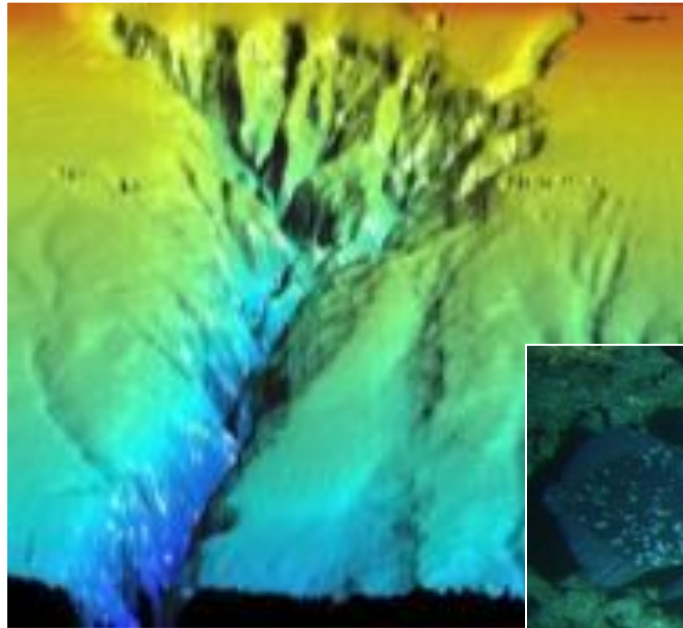
Objectives and approach of the Phakisa Proposed MPA Representative Network

- **Spatially efficient** with consideration of **socio-economic data**
- Include **all habitat types**
- Protect last **remnants of threatened ecosystems** in good ecological condition
- Protect **sensitive** ecosystems
- Protect **key ecological areas**: aggregation, nursery, spawning & feeding areas
- **Support fisheries management**



Anticipated and gains

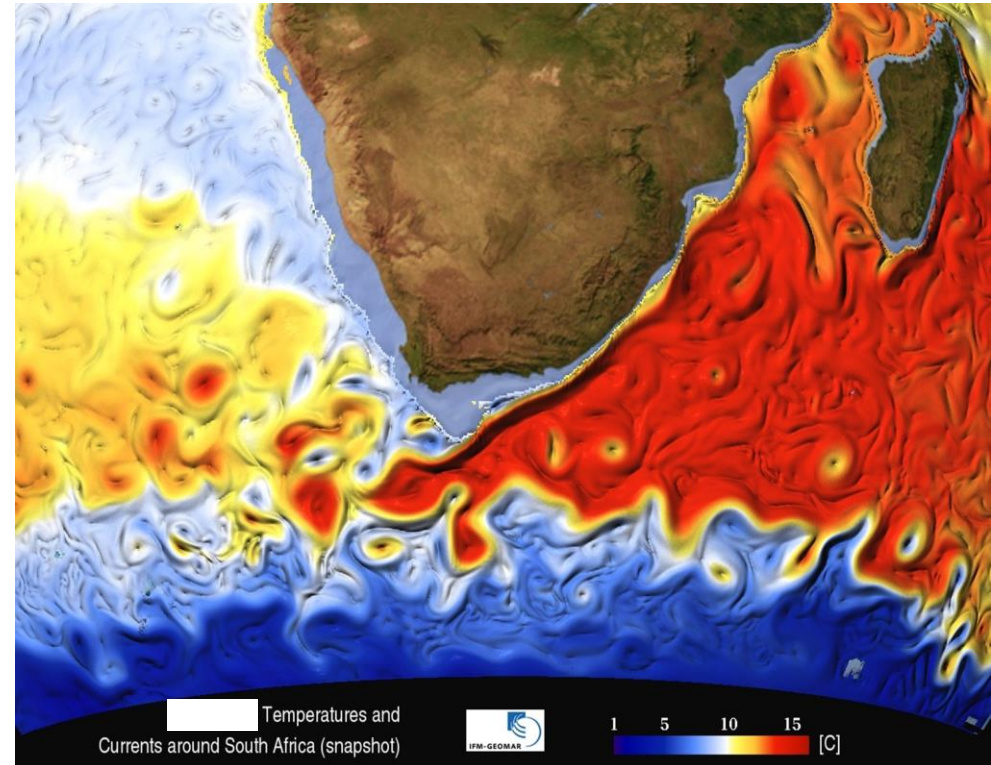
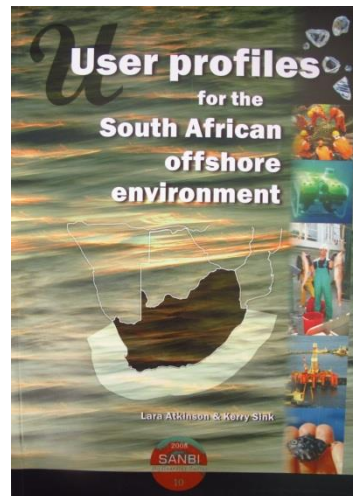
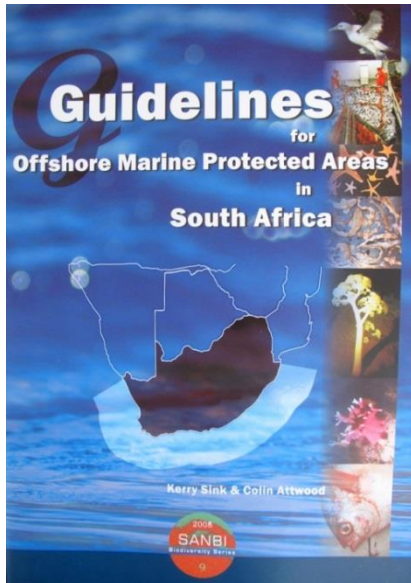
- Proposed new area as gazetted is over 6% of our EEZ
- Advance habitat representation from 60% to 94%.



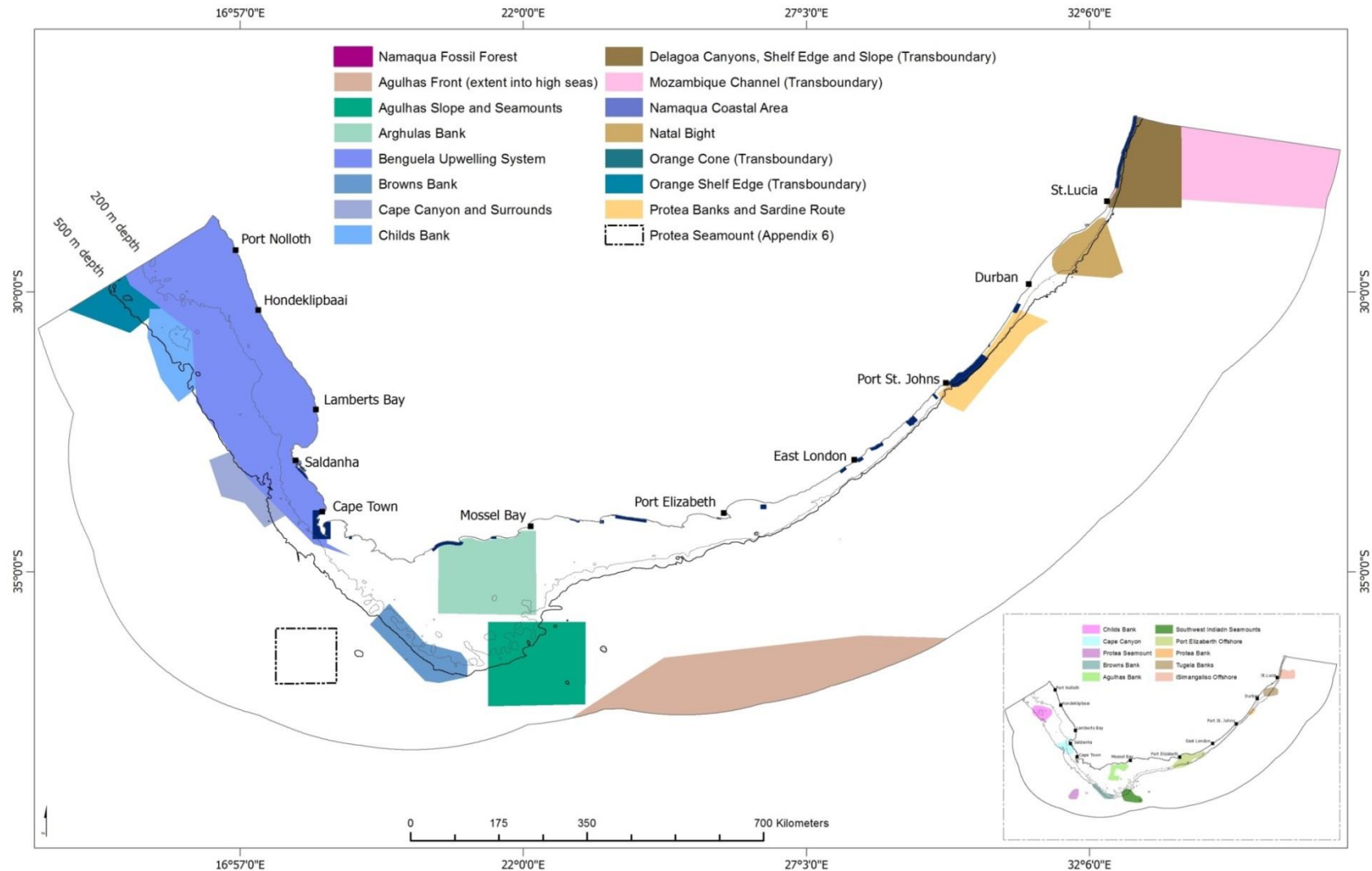
Phakisa MPA planning was built upon previous studies, and also needed to cover SA's unique oceanographic situation

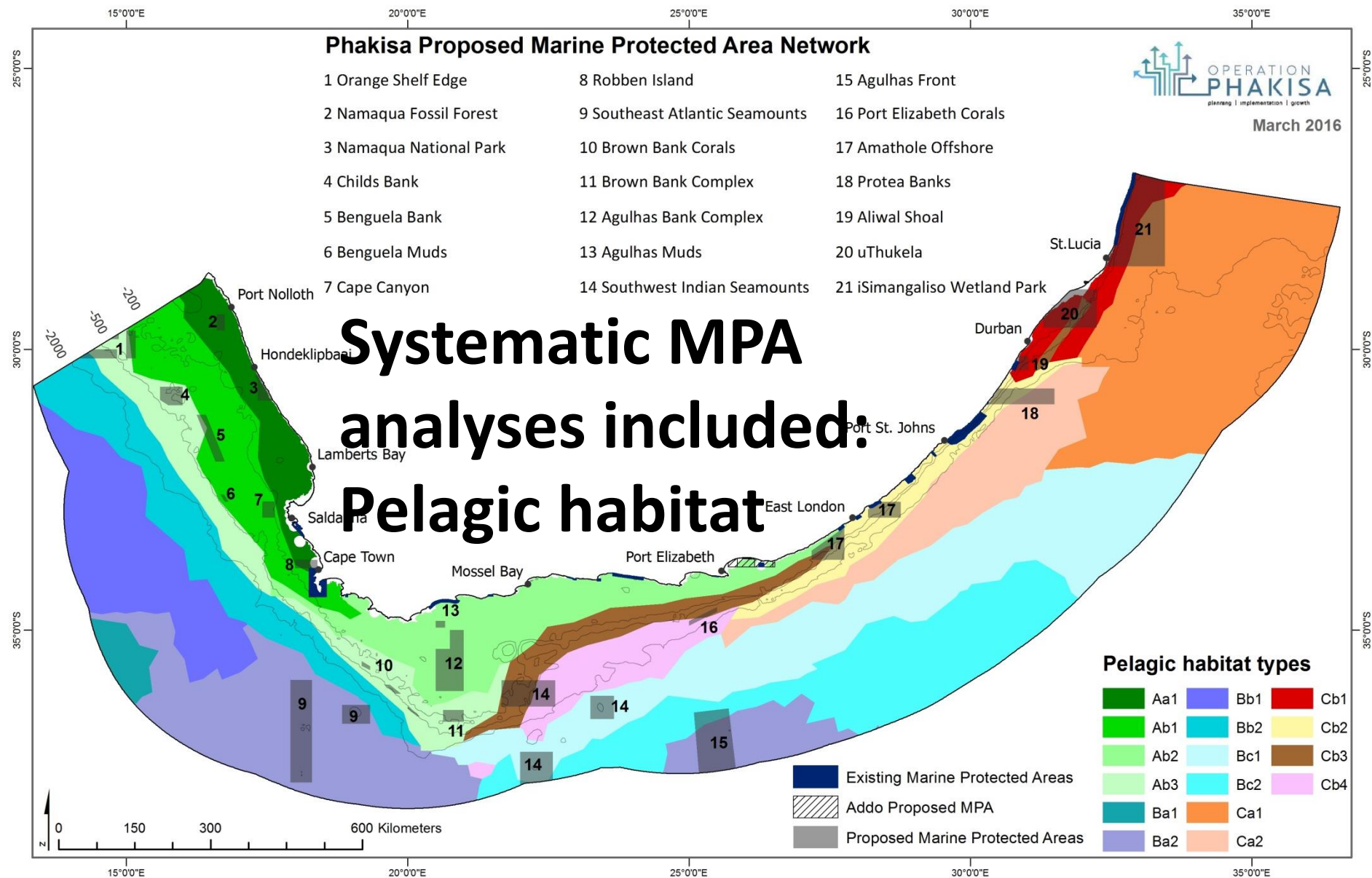
**NATIONAL BIODIVERSITY
ASSESSMENT 2011:
Technical Report
Volume 4:
Marine and Coastal Component**

Warm Agulhas current on our east coast,
upwelling on the west coast, various interactions

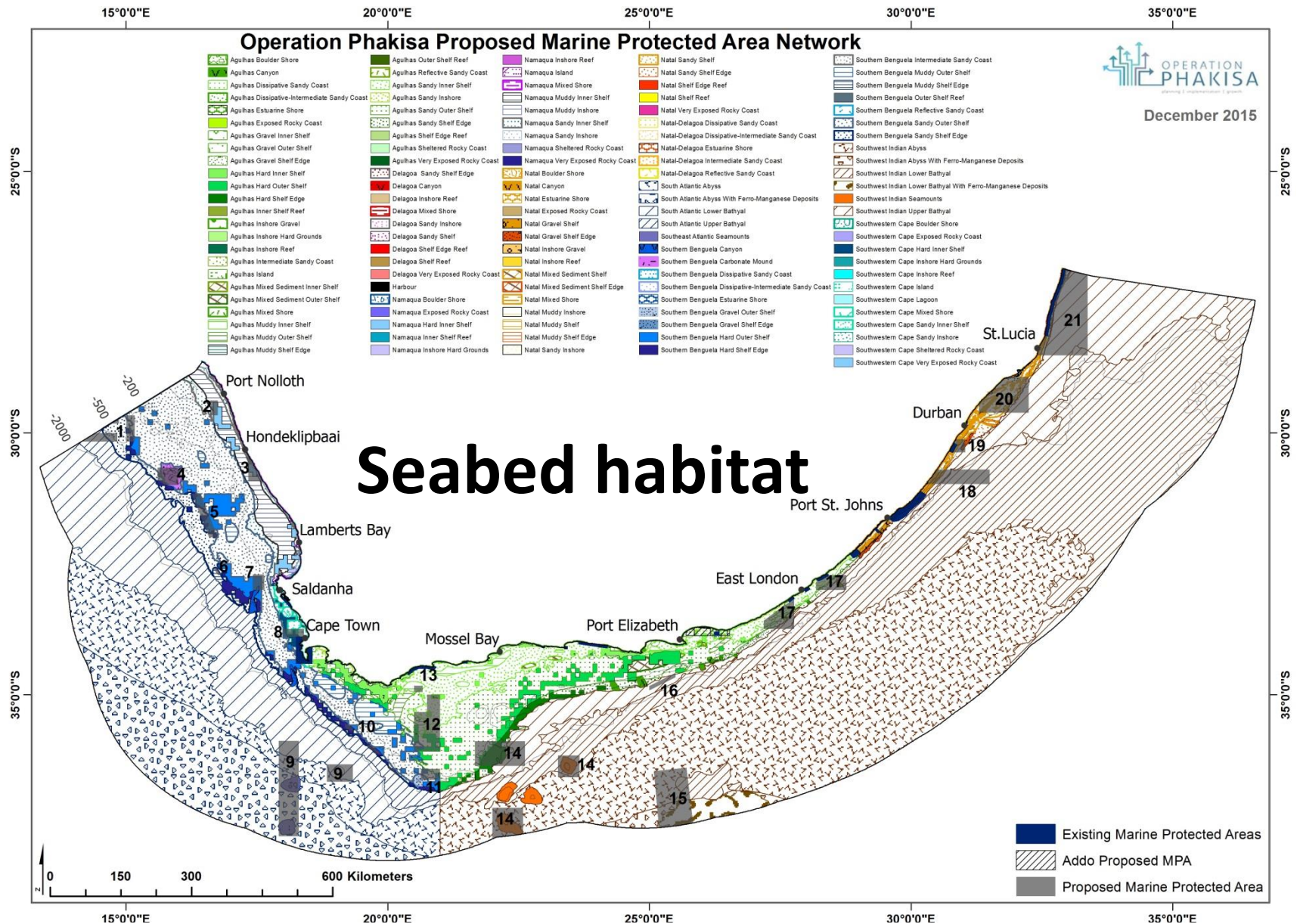


South Africa's 16 EBSAs (developed at two regional workshops organised by the CBD Secretariat)



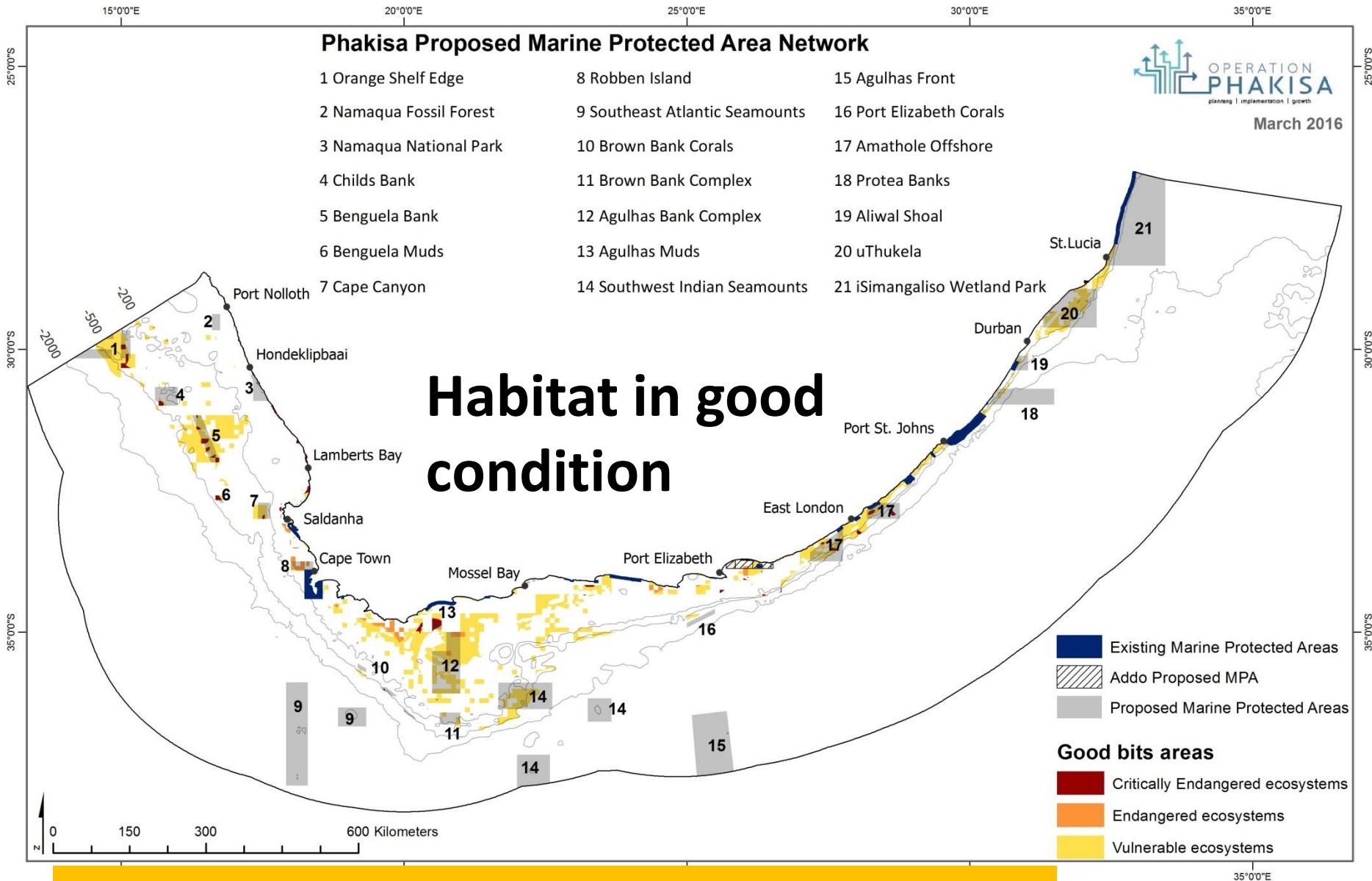


14 of 16 open ocean habitat types included



Advances seabed habitat representation

Proposed network takes **good condition** areas of threatened ecosystems into account

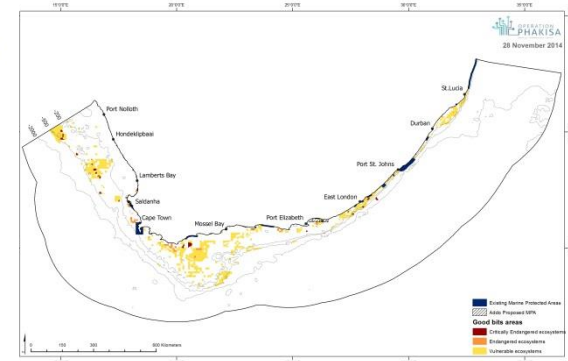
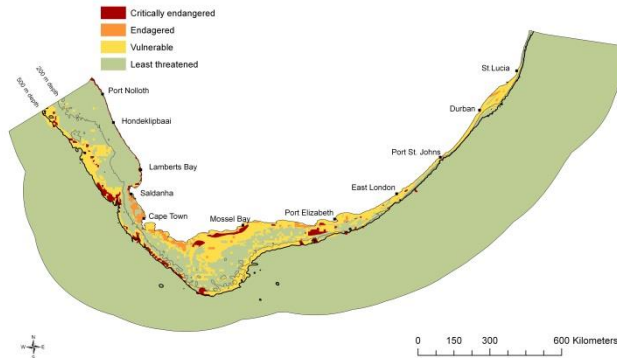
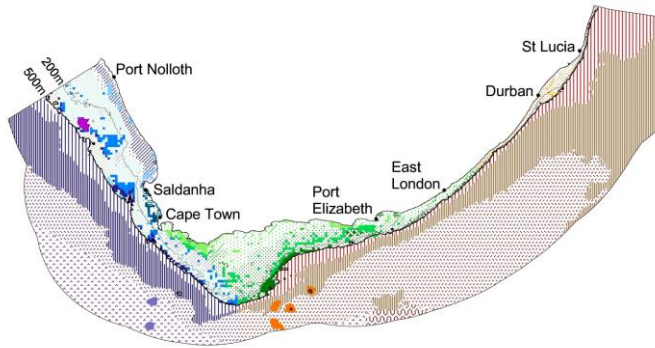


First protection for 10 of 13 Critically Endangered Ecosystems

Input layers used for EBSAs, MPAs ... and soon MSP

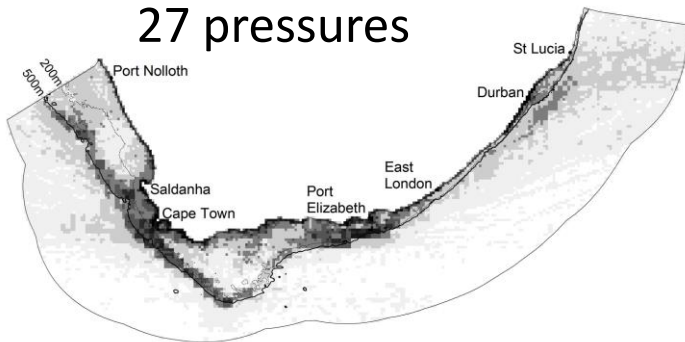
Sensitive areas maps Threat status map

Good bits map

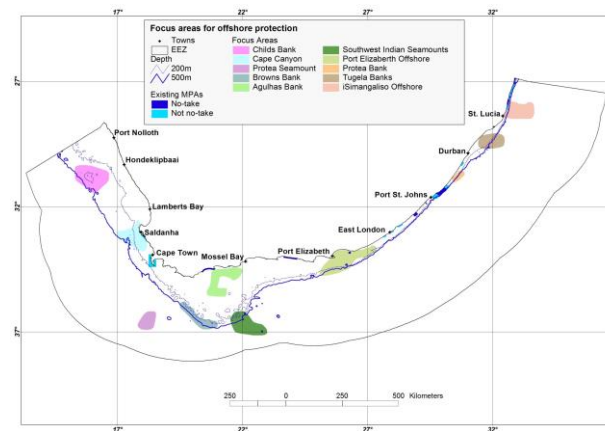


Pressure mapping

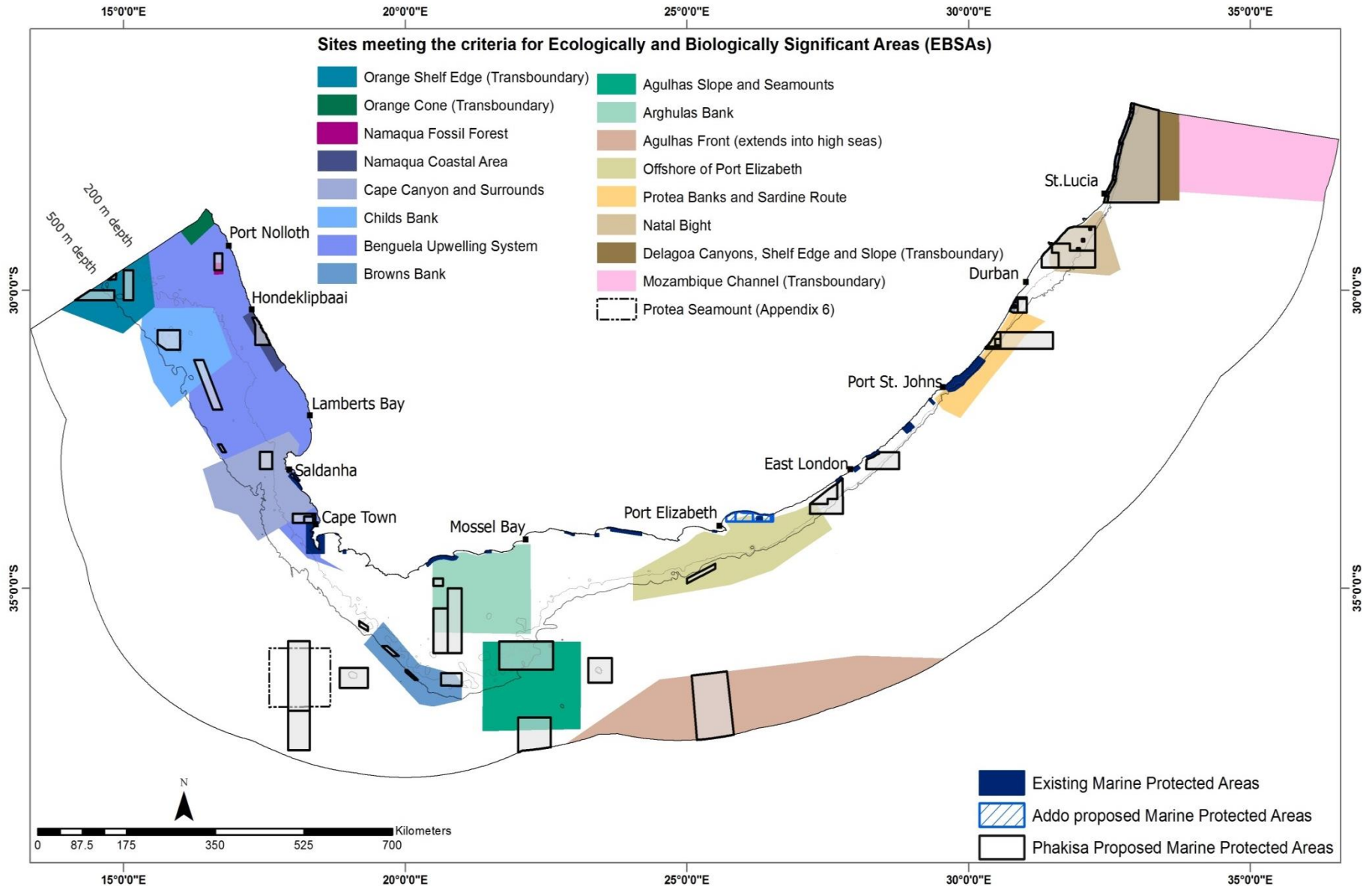
cumulative map
27 pressures

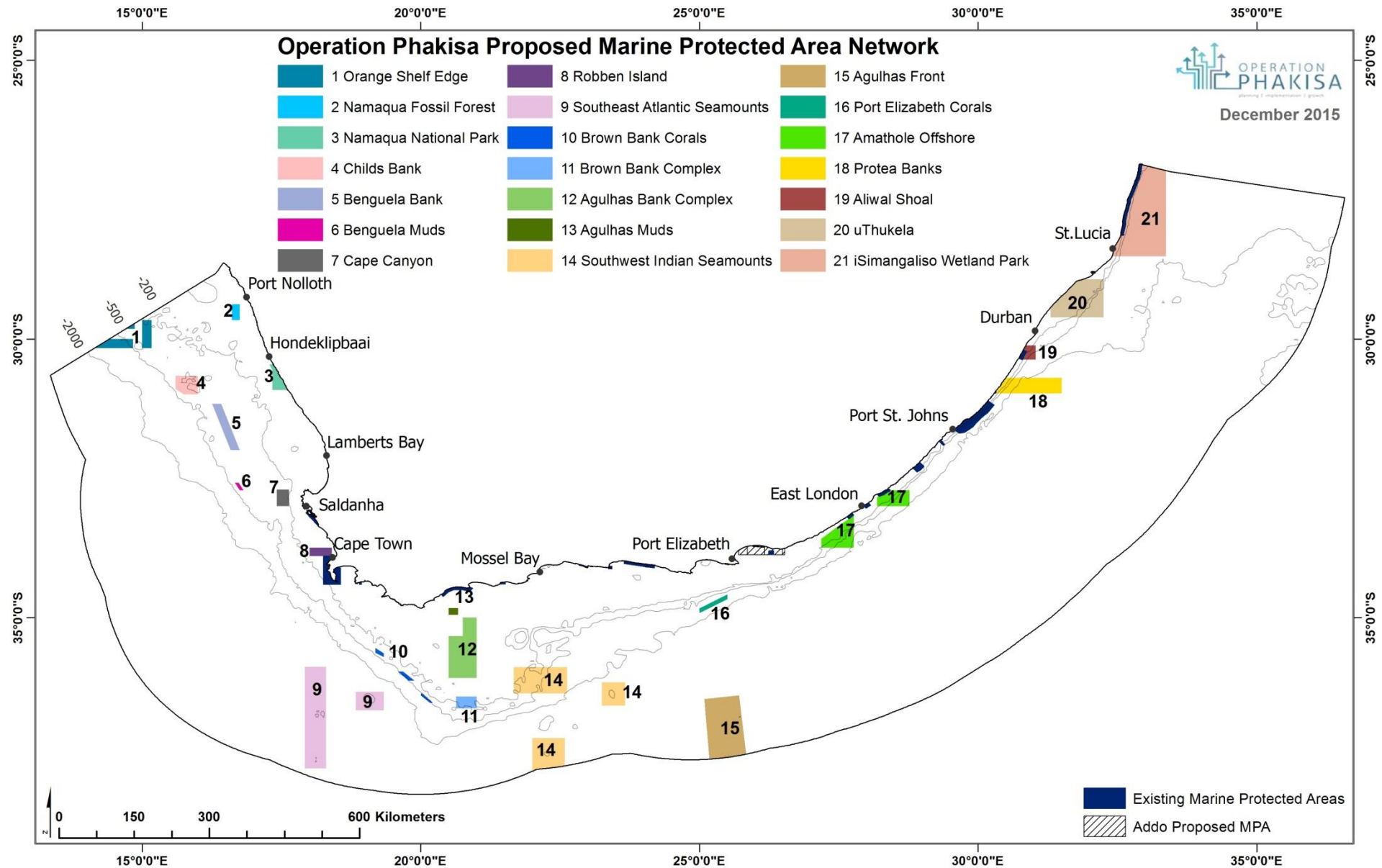


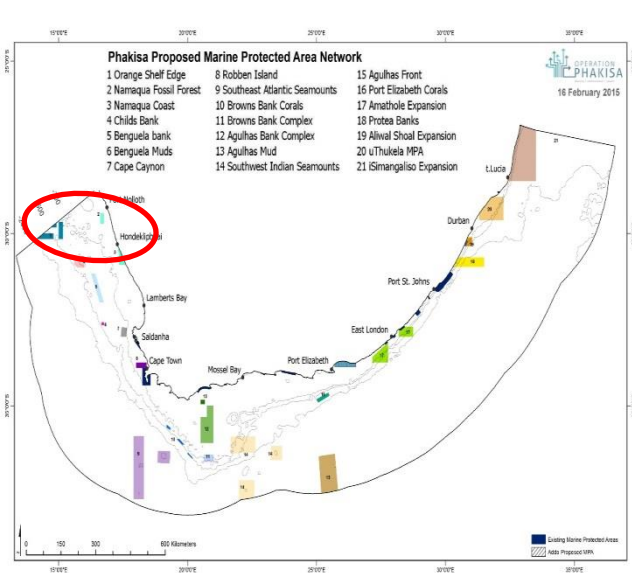
Focus areas for offshore protection



EBSA contribution : In 14 sites EBSAs overlap with Proposed MPAs







Orange Shelf Edge

- 1 960 km²
- un-trawled sandy shelf edge



Namaqua fossil forest

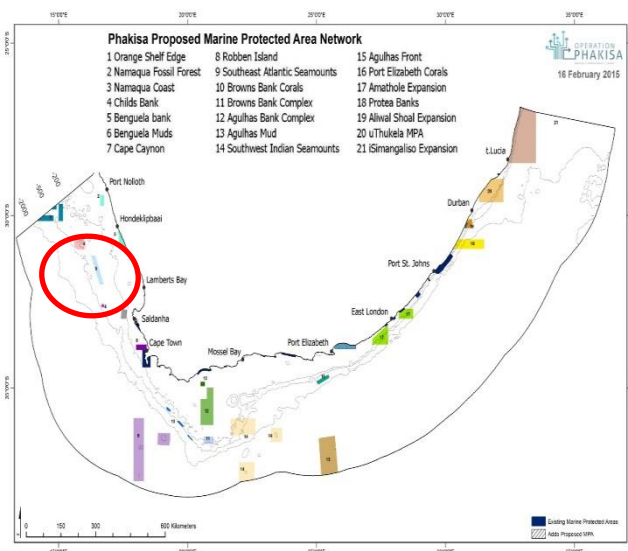
- 430 km²
- Unique fossilised yellowwood forest
- Cold water corals



Namaqua Coast

- Approx 1 500 km²
- First MPA in the ecoregion - habitats in good condition.





Child's Bank

- 1 335 km²
- Sensitive ecosystem, corals



Benguela Bank

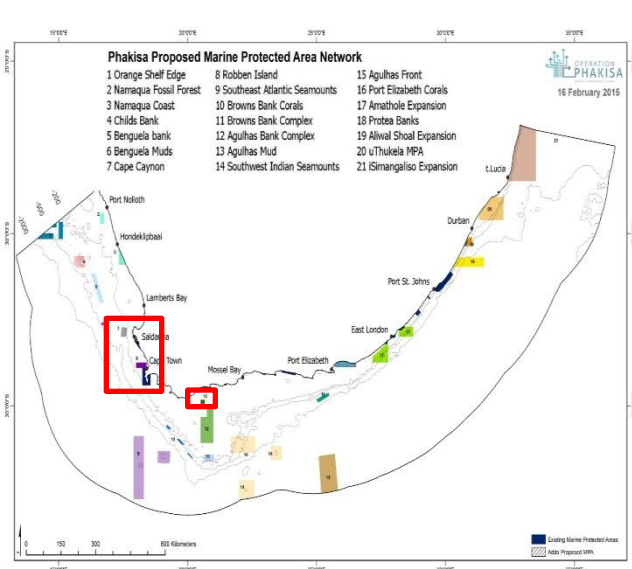
- 1 460 km²
- Untrawled offshore habitats, hard ground



Benguela Muds

- 90 km²
- Critically endangered mud habitat in good condition





Cape Canyon

- 660 km²
- West coast canyon
- Lower socio-economic cost



Robben Island

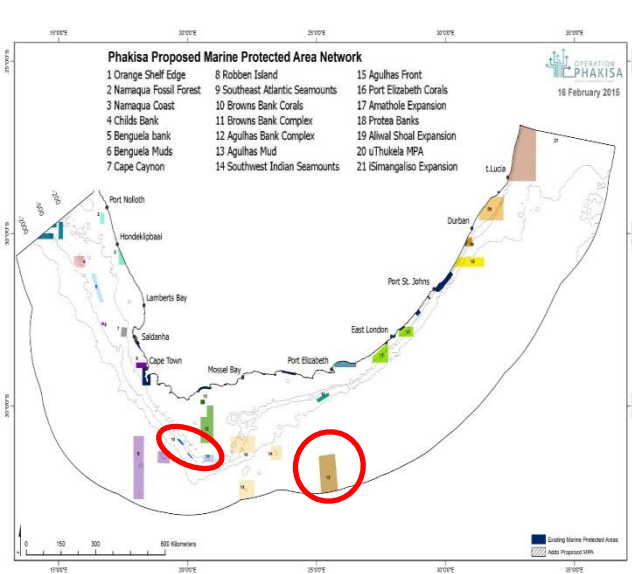
- 620 km²
- Island ecosystem
- Endangered seabirds



Agulhas Mud

- 207 km²
- Good condition mud habitat





Agulhas Front

- 6884 km²
- Habitat diversity
- EBSA area for life history



Brown's Bank Corals

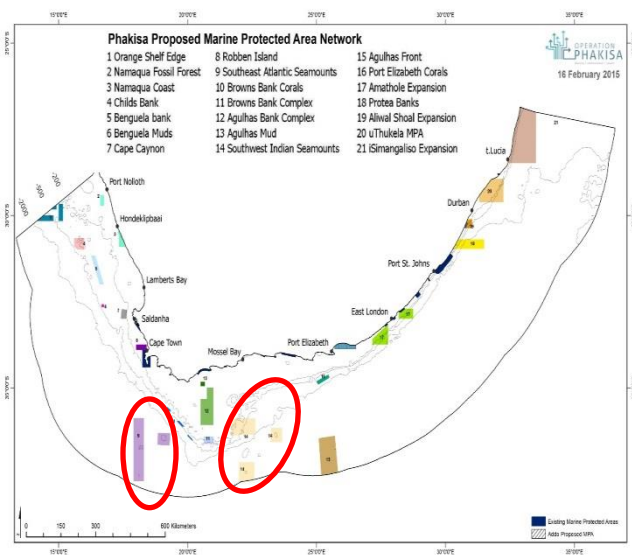
- 380 km²
- Cold water corals



Brown's Bank Complex

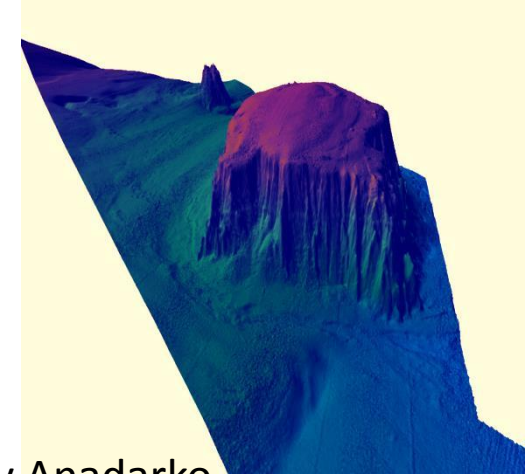
- 783 km²
- High habitat diversity incl. gravels
- Low socio-economic impact





Southeast Atlantic Seamounts

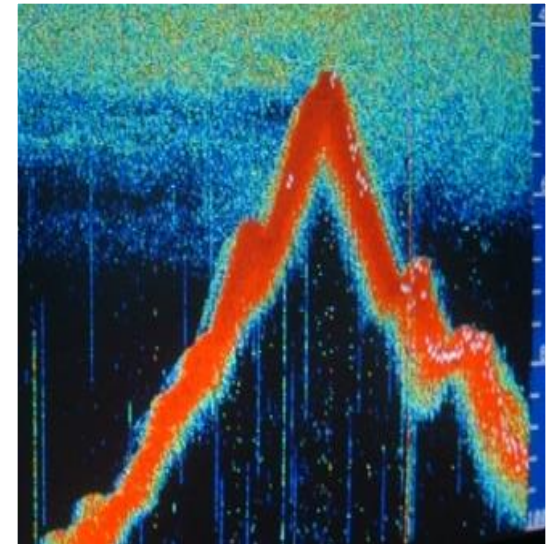
- 8585 km²
- Seamount ecosystems

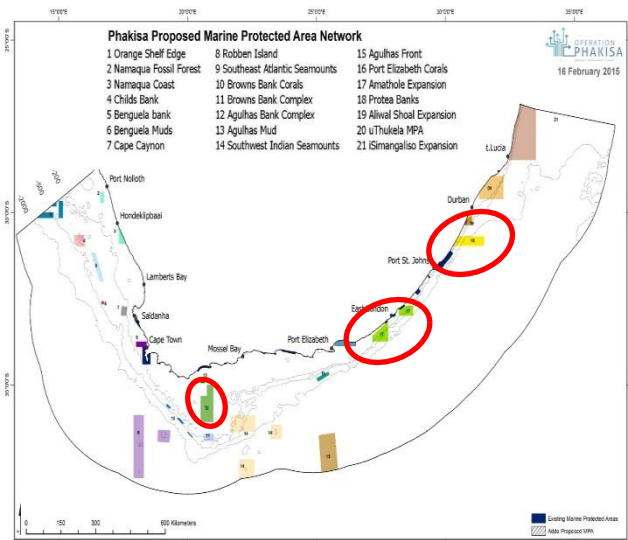


Data provided by Anadarko

Southwest Indian Seamounts

- 9450 km²
- Seamount & many other deep habitats





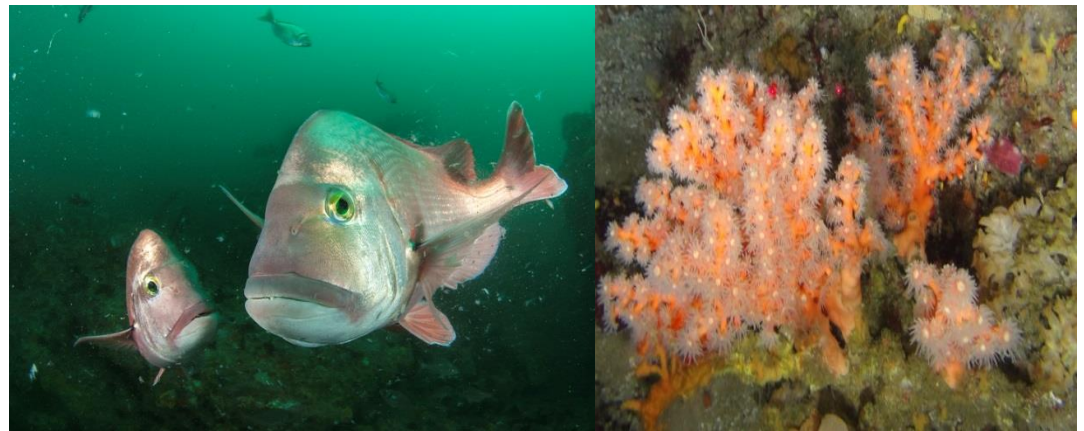
Agulhas Bank Complex

- 4 608 km²
- Nursery & spawning area
- Fisheries sustainability



Amathole Offshore

- 3 810 km²
- Line fish recovery
- Habitat diversity
- Coelacanth site

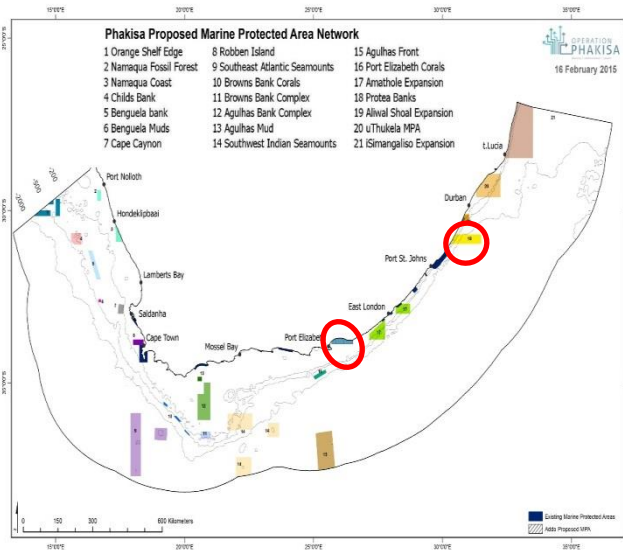


Protea banks

3229 km²

- Shark aggregations & eco-tourism





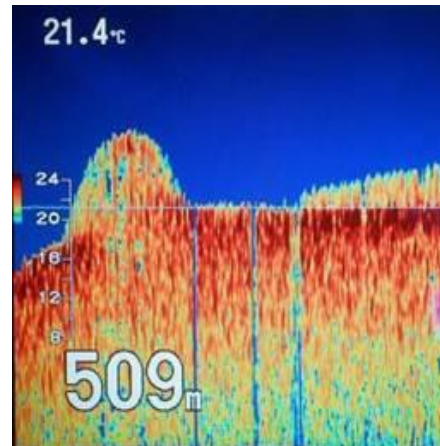
Addo Elephant

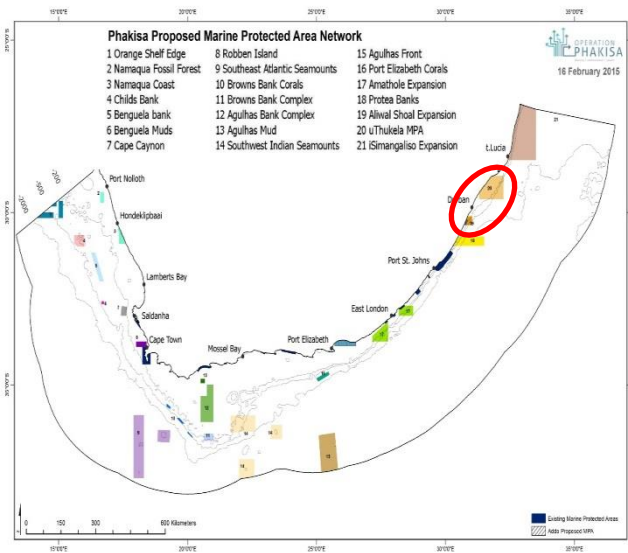
- 1 164 km²
- African penguin, linefish & abalone



Port Elizabeth Corals

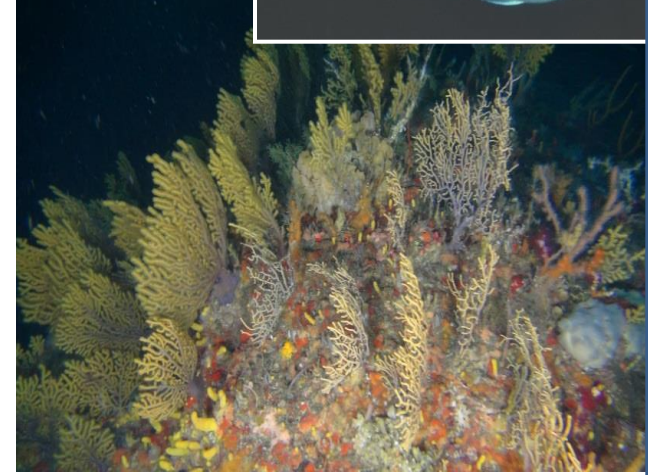
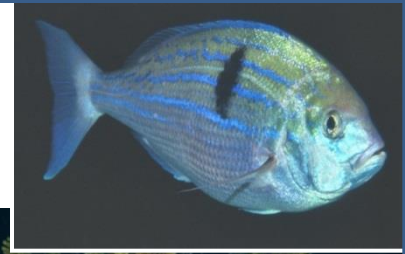
- 500 km²
- Cold water coral reef
- Kingklip spawning





Aliwal Shoal Expansion

- 577 km²
- Fish spawning ground
- Deep reefs



uThukela Banks

- 5666 km²
- Coast canyon connectivity
- Nursery area
- Soft sediment habitats



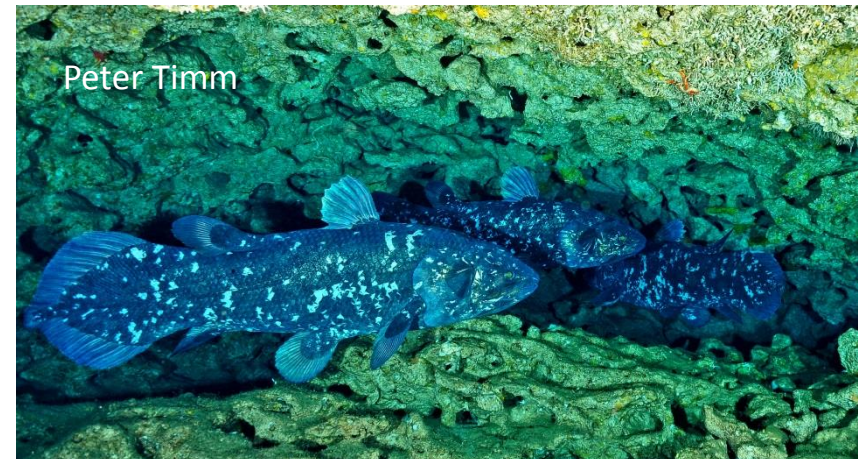
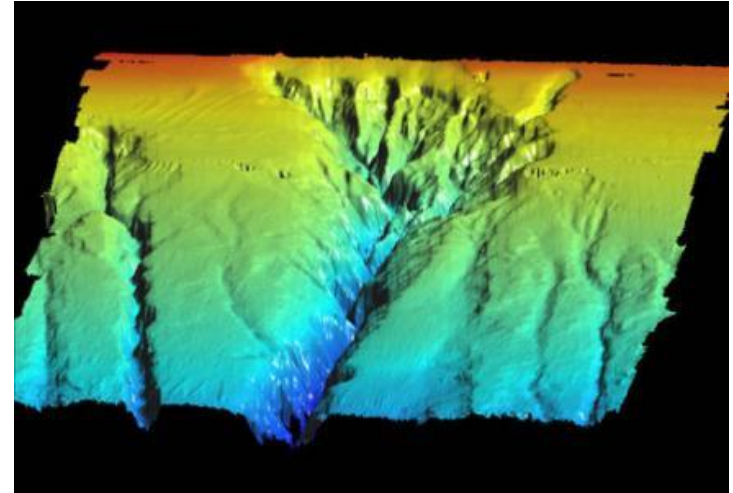
iSimangaliso extension

Mozambique border – Cape
St Lucia lighthouse
14 236 km², 0-1800m

- Leatherback turtle foraging area & importance for migratory species
- Coelacanth habitat
- Alignment with World Heritage Site boundaries
- Integrated enforcement opportunities

Key sources of info: Harris et al. (2012), Sink et al. (2012, 2011), Sink and Samaai (2009)

Brian
Skerry ©



How do the Proposed MPAs align with development?

- They take account of future development plans such as for ports and industrial development zones.
- They provide increased certainty for planning oil and gas development – where it can likely take place.
- Parts of the network accommodate sustainable fisheries including small-scale fisheries, and aquaculture
- Marine eco-tourism development is accommodated.
- They provide a sound basis for Ocean Governance and Protection regarding Marine Spatial Planning (MSP).

Port St. Johns

East London

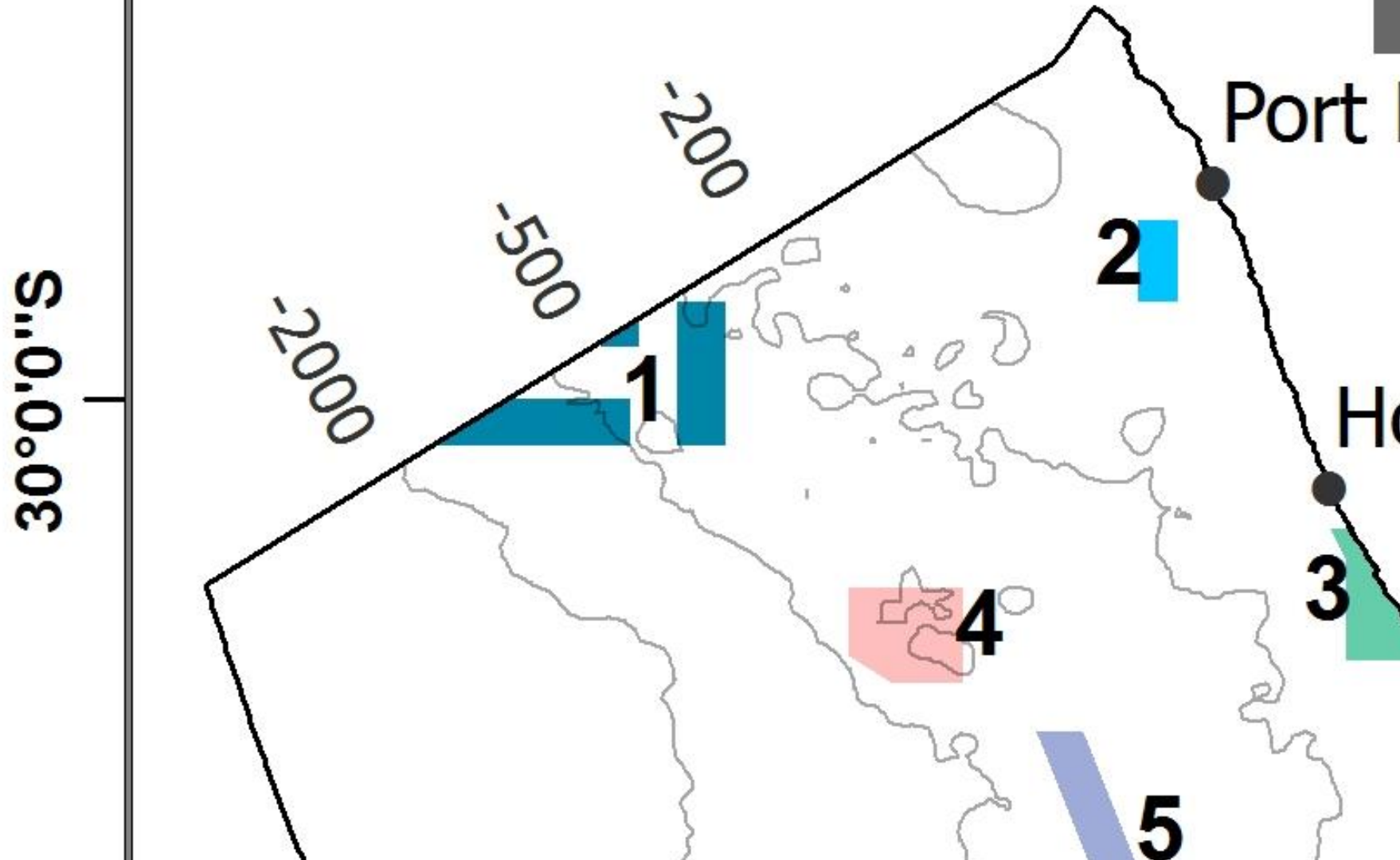
17

17

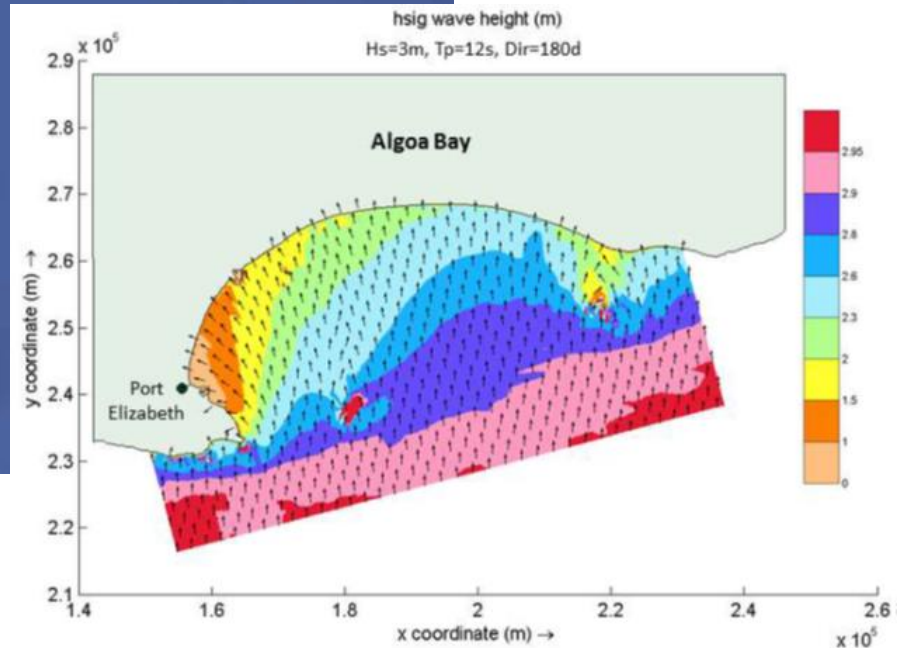
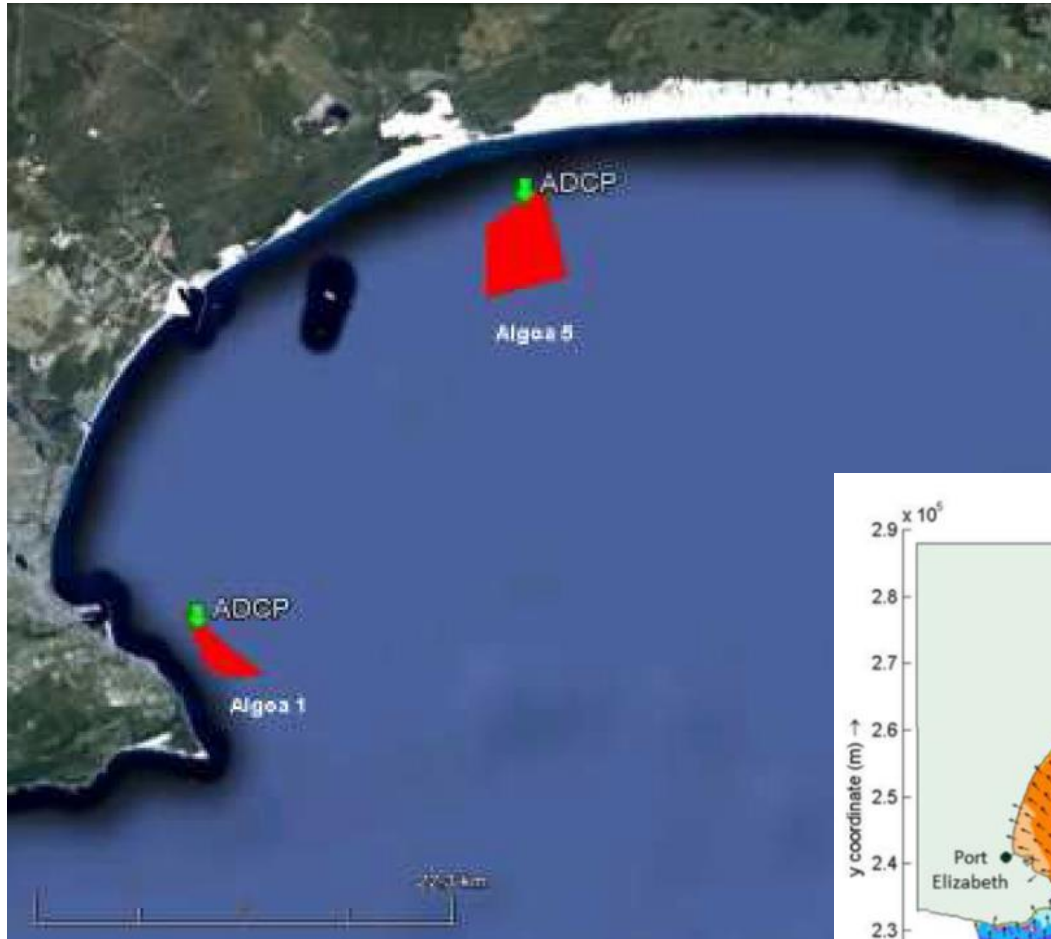
**Industrial development
zones to be avoided**



1. Boundary
adjustment for oil
and gas under
development



Sheltered Bay environments will need to be multi-use





Government Gazette Staatskoerant

REPUBLIC OF SOUTH AFRICA
REPUBLIEK VAN SUID AFRIKA

Regulation Gazette No. 10553 Regulasiekoerant
Vol. 608 3 February 2016 No. 39646
Februarie

PART 1 OF 3

N.B. The Government Printing Works will
not be held responsible for the quality of
"Hard Copies" or "Electronic Files"
submitted for publication purposes

ISSN 1682-5843



0 771682 584003



39646



AIDS HELPLINE: 0800-0123-22 Prevention is the cure

- Gazette no. 39646
- Notice of Intention to declare
- Draft Regulations
- **Individual documentation** for each of the 22 proposals

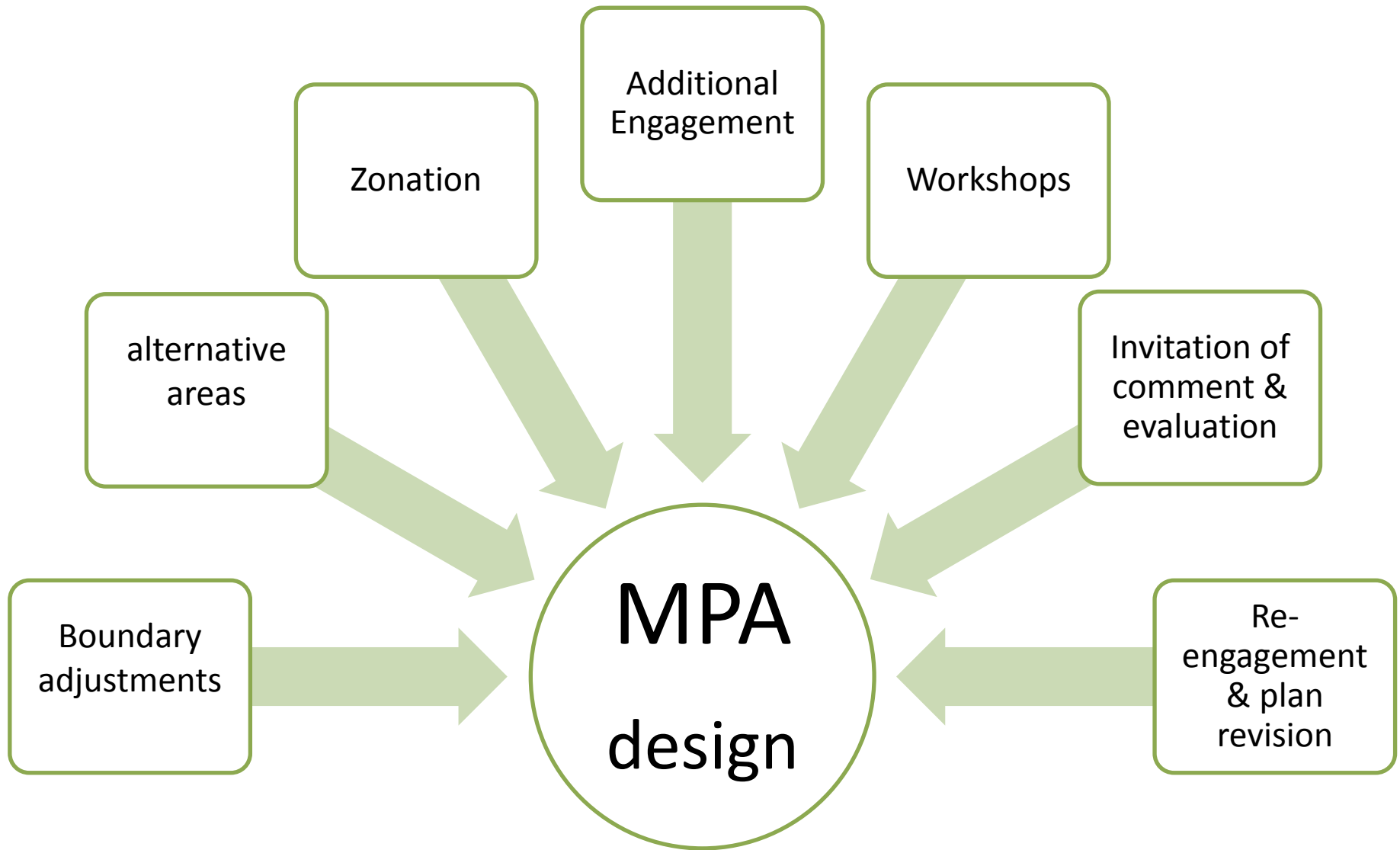
Stakeholder Consultation (prior to gazetting)

- Key stakeholders for each area in the network identified
- Potential activities that may be compatible in each MPA were recognised
- Proposed zonation developed

Formal Consultation process began 3 Feb 2016.

- **Comments close 17 May 2016**
- **Target: Recommendations to Minister due Dec 2016**

Addressing stakeholder concerns



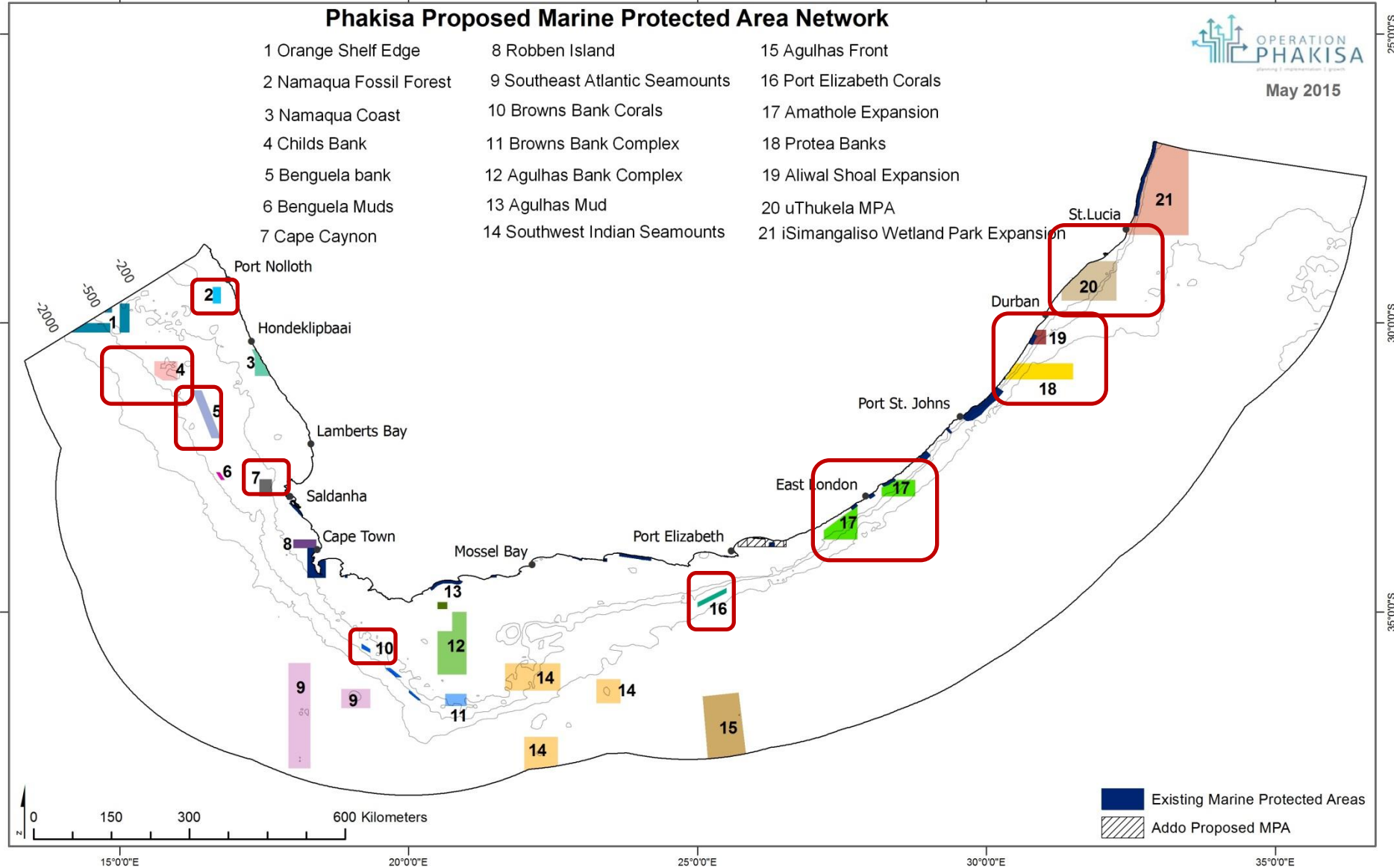
New offshore research initiated

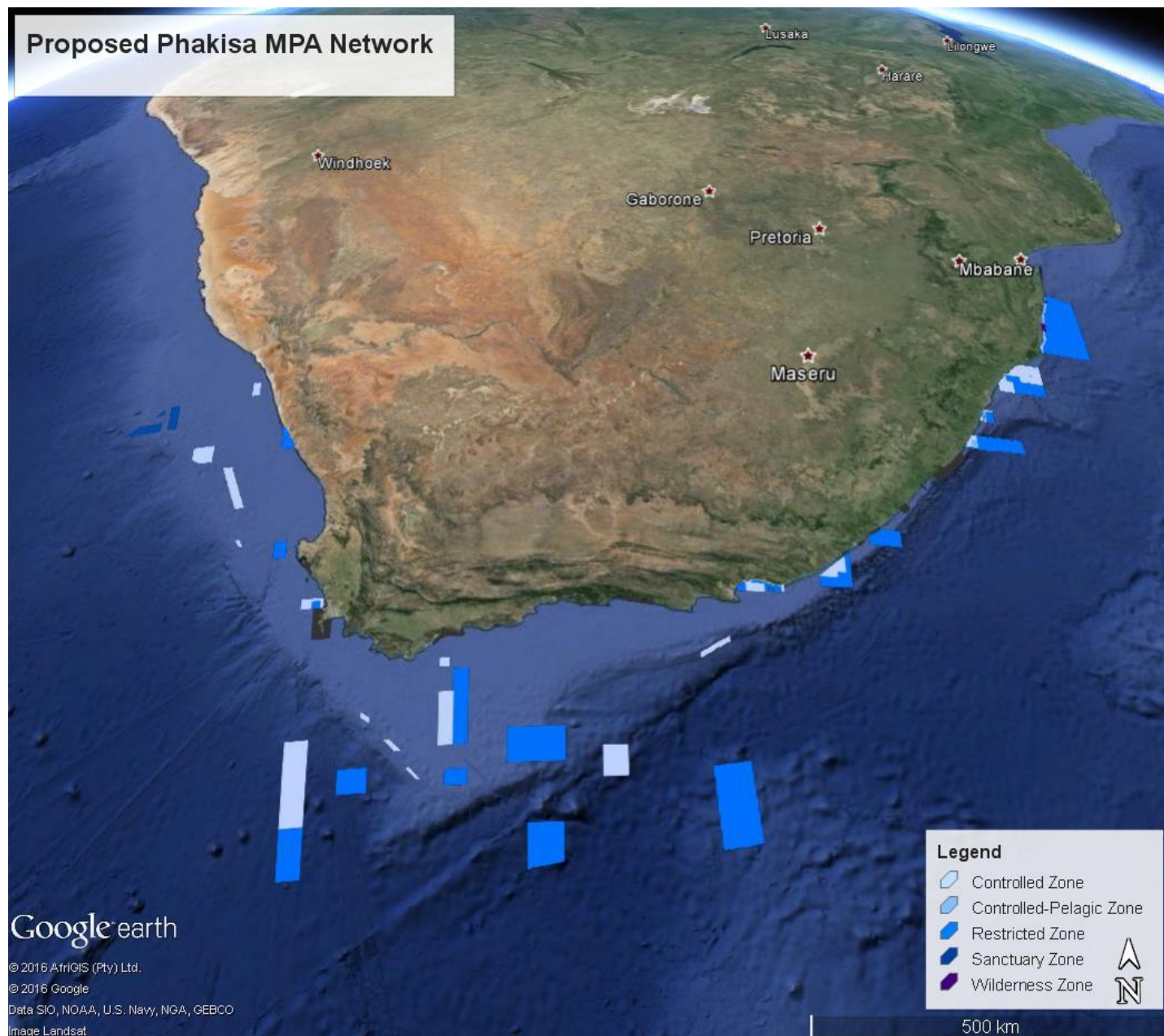


May 2015

Phakisa Proposed Marine Protected Area Network

- | | | |
|-------------------------|--------------------------------|--|
| 1 Orange Shelf Edge | 8 Robben Island | 15 Agulhas Front |
| 2 Namaqua Fossil Forest | 9 Southeast Atlantic Seamounts | 16 Port Elizabeth Corals |
| 3 Namaqua Coast | 10 Browns Bank Corals | 17 Amathole Expansion |
| 4 Childs Bank | 11 Browns Bank Complex | 18 Protea Banks |
| 5 Benguela bank | 12 Agulhas Bank Complex | 19 Aliwal Shoal Expansion |
| 6 Benguela Muds | 13 Agulhas Mud | 20 uThukela MPA |
| 7 Cape Caynon | 14 Southwest Indian Seamounts | 21 iSimangaliso Wetland Park Expansion |





These MPAs will take South Africa much closer to the Aichi Target 11



Thank You



environmental affairs

Department:
Environmental Affairs
REPUBLIC OF SOUTH AFRICA

